

Safeguarding Vulnerable Adults Policy

GoCreate Taunton CIC



Policy approved : 15/11/2024

Next review Date: 15/11/2025

GoCreate Taunton CIC believes that no one should ever experience abuse of any kind, and that we have a responsibility to promote the welfare of all people that come into contact with our service and to keep them safe. We are committed to practice in a way that protects them.

The purpose of this policy is to demonstrate the commitment of GoCreate Taunton CIC to safeguarding adults and to ensure that everyone involved with GoCreate is aware of:

- The legislation, policy and procedures for safeguarding adults.
- Their role and responsibility for safeguarding adults.
- What to do or who to speak to if they have a concern

Scope

This policy and its procedures applies to all individuals involved in GoCreate Taunton CIC including participants, staff, committee members and Volunteers.

Legislation

In its wider context, safeguarding adults applies to everyone over 18 and is about:

- protecting an adult's right to live in safety, free from abuse and neglect.
- people and organisations working together to prevent and stop both the risks and experience of abuse and neglect, while at the same time making sure that the adult's wellbeing is promoted taking fully into account their views, wishes, feelings and beliefs in deciding on any action.

The practices and procedures within this policy are based on the relevant legislation and government guidance which can be found here [The key legislation and government initiatives](#).

GoCreate Taunton CIC

- believes everyone has the right to live free from abuse or neglect regardless of age, ability or disability, sex, race, religion, ethnic origin, sexual orientation, marital or gender status.
- Is committed to the six principles of safeguarding adults which includes: empowerment, protection, prevention, proportionality, partnership and accountability.
(England)
- is committed to Safeguarding Adults in line with national legislation and relevant local guidelines by ensuring that our activities are delivered in a way which keeps all adults safe by creating and maintaining a safe and positive environment and an open, listening culture where people feel able to share concerns without fear of retribution.
- recognises that health, well-being, ability, disability and need for care and support can affect a person's resilience. GoCreate Taunton CIC recognises that some people experience barriers, for example, to communication in raising concerns or seeking help.
- accepts that we are required to fulfil our duty of care, which means that we must do everything that can be reasonably expected of us to help safeguard and protect people from harm, and to act when we suspect that someone is being harmed, or is at risk of harm.
- is committed to creating a culture of zero-tolerance of harm to adults which necessitates: the recognition of adults who may be at risk and the circumstances which may increase risk and being willing to report safeguarding concerns.

Implementation

GoCreate Taunton CIC follows safer recruitment procedures when employing staff and volunteers. This includes enhanced DBS checks.

- The committee will identify and appoint a Lead Safeguarding Officer and will notify members as to who this is and how to contact them.
- All staff, committee member, volunteers have received safeguarding adults training.
- All activities include an assessment of, and risk to, the safety of all adults from abuse and neglect and designates a person who will be in attendance as a safeguarding lead for that event.

- All staff are aware of the of the safeguarding reporting procedures and the importance of confidentiality.
- This policy is shared with all staff, committee members, volunteers and participants
- This policy is reviewed on an annual basis.

Procedures

James Eastwell is the Designated Safeguarding Lead (DSL) who responsible for ensuring that this policy is adhered to. They will be responsible for the monitoring and recording of any safeguarding concerns and for ensuring that all concerns are shared with the appropriate authorities. It is not the role of the DSL to investigate, only to gather and share information as appropriate. The Designated Safeguarding Lead (DSL) person can be contacted via email at safeguarding@gocreate.org.uk or on his mobile on 07968 290195

Abuse

Anyone can carry out abuse or neglect, including:

- Spouses/partners
- Other family members
- Neighbours
- Friends
- Acquaintances
- People who deliberately exploit adults they perceive as vulnerable to abuse
- Paid staff or professionals
- Volunteers and strangers.

Abuse can happen anywhere, for example, in someone's own home, in a public place, in hospital, in a care home or in college. It can take place when an adult lives alone or with others.

Types of Abuse

Disability Hate Crime

The Criminal Justice System defines a disability hate crime as any criminal offence, which is perceived, by the victim or any other person, to be motivated by hostility or prejudice based on a person's disability or perceived disability.

Discriminatory Abuse

Discrimination on the grounds of race, faith or religion, age, disability, gender, sexual orientation and political views, along with racist, sexist, homophobic or ageist comments or jokes, or comments and jokes based on a person's disability or any other form of harassment, slur or similar treatment.

Domestic Abuse

Any incident or pattern of incidents of controlling, coercive or threatening behaviour, violence or abuse between those aged 16 or over, who are or have been intimate partners or family members regardless of gender or sexuality.

Female Genital Mutilation (FGM)

Involves procedures that intentionally alter or injure female genital organs for non-medical reasons.

Financial or Material Abuse

Theft, fraud, internet scamming, coercion in relation to an adult's financial affairs or arrangements, including in connection with wills, property, inheritance or financial transactions, or the misuse or misappropriation of property, possessions or benefits.

Forced Marriage

Is a term used to describe a marriage in which one or both of the parties are married without their consent or against their will.

Honour-based Violence

Honour-based violence includes domestic violence, concerns about forced marriage, enforced house arrest and missing person's reports. Women are predominantly (but not exclusively) the victims and the violence is often committed with a degree of collusion from family members and/or the community.

Human Trafficking

It is run like a business with the supply of people and services to a customer, all for the purpose of making a profit. Traffickers exploit the social, cultural or financial vulnerability of the victim and place huge financial and ethical obligations on them. They control almost every aspect of the victim's life, with little regard for the victim's welfare and health.

Mate Crime

A 'mate crime' is when a vulnerable people are befriended by members of the community who go on to exploit and take advantage of them. It may not be an illegal act but still has a negative effect on the individual.

Modern Slavery

Slavery, servitude and forced or compulsory labour.

Neglect and Acts of Omission

Ignoring medical, emotional or physical care needs, failure to provide access to appropriate health, social care or educational services, and the withholding of the necessities of life such as medication, adequate nutrition and heating. Neglect also includes a failure to intervene in situations that are dangerous to the person concerned or to others particularly when the person lacks the mental capacity to assess risk for themselves.

Organisational Abuse

Is the mistreatment, abuse or neglect of an adult by a regime or individuals in a setting or service where the adult lives or that they use. Such abuse violates the person's dignity and represents a lack of respect for their human rights.

Physical Abuse

Assault, hitting, slapping, pushing, misuse of medication, restraint or inappropriate physical sanctions

Psychological Abuse

Emotional abuse, threats of harm or abandonment, deprivation of contact, humiliation, blaming, controlling, intimidation, coercion, harassment, verbal abuse, cyber bullying, isolation or unreasonable and unjustified withdrawal of services or supportive networks.

Restraint

Unlawful or inappropriate use of restraint or physical interventions. In extreme circumstances unlawful or inappropriate use of restraint.

Sexual Abuse

Rape, indecent exposure, sexual harassment, inappropriate looking or touching, sexual teasing or innuendo, sexual photography, subjection to pornography or witnessing sexual acts, indecent exposure and sexual assault or sexual acts to which the adult has not consented or was pressured into consenting.

Sexual Exploitation

Involves exploitative situations, contexts and relationships where adults at risk (or a third person or persons) receive 'something' (e.g. food, accommodation, drugs, alcohol, cigarettes, affection, gifts, money) as a result of them performing, and/or another or others performing on them, sexual activities.

Radicalisation

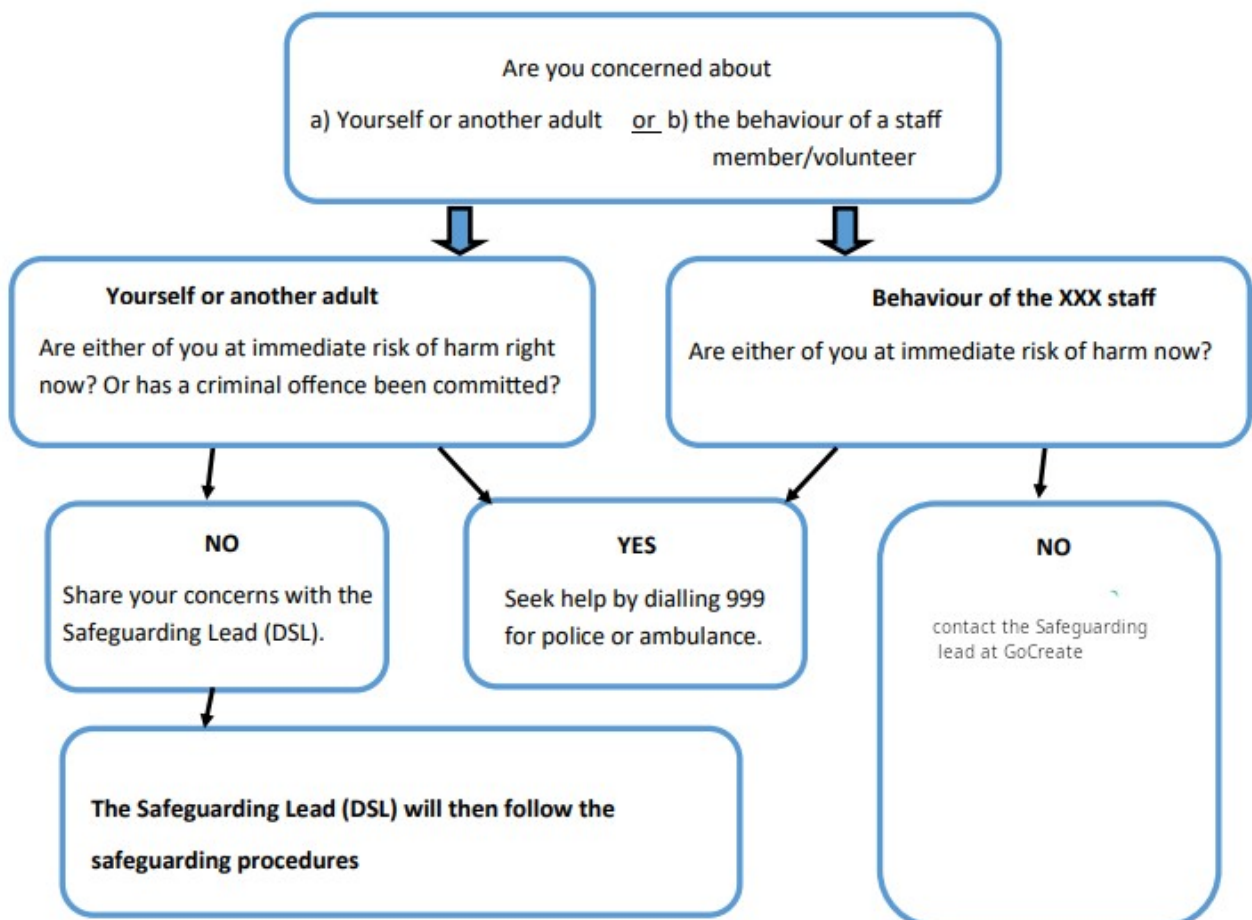
Radicalisation is comparable to other forms of exploitation, such as grooming and child sexual exploitation. The aim of radicalisation is to attract people to their reasoning, inspire new recruits and embed their extreme views and persuade vulnerable individuals of the legitimacy of their cause.

Raising and Managing a Concern

Below is an example of a reporting route.

Raising and Managing a Concern

Example Flowchart for a service user



Supporting the adult through the process

The Safeguarding Lead (DSL) should:

- Speak with the adult concerned
- Determine the wishes of the adult concerned to ensure the process is person led and outcome focused.
- Seek external guidance and advice as appropriate (this could include the NGB, Centre Manager, Adults Safeguarding Team, Active Partnership or Ann Craft Trust)
- Offer support and information for the adult concerned to make informed choices.
- Put measures in place to keep the adult safe during the activity (if appropriate)
- Ask for consent to report the concern to statutory agencies if appropriate.
- Keep the adult informed and involved throughout the process
- Any safeguarding concerns can be reported to the safeguarding lead or to a committee member or volunteer who will refer directly to the DSL..
- Any concern that an adult is not safe is taken seriously, responded to promptly, and followed up.
- The DSL will speak to the adult about the issue wherever possible, noting any views that the adult may have regarding how they wish the matter to be dealt and keeping them informed throughout the process.
- The DSL may seek advice from external sources such as the local Safeguarding Adults Team, the Local Active Partnership, police or Ann Craft Trust.
- The DSL will only share information with the people who need to know – such as the Safeguarding Adults Team, police or local Active Partnership. Any referrals or passing on of information will be done with the consent of the adult wherever possible. If consent is withheld, but information is still passed on, the DSO will clearly document this and the reasons why. They will also inform the adult of this action wherever possible.
- The DSL will make a written record of the concern and store it safely in line with Data Protection requirements.

Note:

If someone is injured or at immediate risk, immediate action should be taken. Seek help by dialling 999 for police or ambulance.

Whistleblowing

If the Safeguarding Lead or staff member is implicated or you think has a conflict of interest, then contact the Somerset Local Authority Adult Safeguarding Team on 0300 123 2224, Monday to Friday, 8:30 AM to 5 PM , email: adults@somerset.gov.uk or call out of hours on 0300 123 23 27

Recording and Information Sharing

When sharing Information we work to the “Seven Golden Rules”

1. GDPR is not a barrier to sharing information
2. Be open and honest
3. Seek advice, if in doubt
4. Share with consent where appropriate
5. Consider safety and wellbeing
6. Necessary, proportionate, relevant, accurate, timely and secure
7. Keep a record of your decision and reasons for sharing

Sources of Information and Support

Somerset Council Report an Adult at Risk - <https://www.somerset.gov.uk/care-and-support-for-adults/report-an-adult-at-risk/>

Somerset Safeguarding Adults Board <https://somensetsafeguardingadults.org.uk/>

Action on Elder Abuse - Aims to prevent the abuse of older people by raising awareness, encouraging education, promoting research and collecting and dis-seminating information.

Tel: 020 8765 7000

Email: enquiries@elderabuse.org.uk www.elderabuse.org.uk

Ann CraftTrust (ACT) - A national organisation providing information and advice about adult safeguarding. ACT have a specialist Safeguarding Adults in Sport and Activity team to support the sector

Tel: 0115 951 5400 Email: Ann-Craft-Trust@nottingham.ac.uk www.anncrafttrust.org

Men's Advice Line For male domestic abuse survivors Tel: 0808 801 0327

National LGBT+ Domestic Abuse Helpline Tel: 0800 999 5428

Respond - Respond provides a range of services to victims and perpetrators of sexual abuse who have learning disabilities, and training and support to those working with them.

Tel: 020 7383 0700 or 0808 808 0700 (Helpline) www.respond.org.uk

StopHateCrime - Works to challenge all forms of Hate Crime and discrimination, based on any aspect of an individual's identity. Stop Hate UK provides independent, confidential and accessible reporting and support for victims, witnesses and third parties.

Telephone: 0800 138 1625 Web Chat: www.stophateuk.org/talk-to-us/

Susy Lamplugh Trust - The Trust is a leading authority on personal safety. Its role is to minimise the damage caused to individuals and to society by aggression in all its forms – physical, verbal and psychological.

Tel: 020 83921839 Email: info@suzylamplugh.org www.suzylamplugh.org

VictimSupport - Provides practical advice and help, emotional support and reassurance to those who have suffered the effects of a crime.

Tel: 0808 168 9111 www.victimsupport.com

Women's Aid Federation of England and Wales - Women's Aid is a national domestic violence charity. It also runs a domestic violence online help service.

www.womensaid.org.uk/information-support